

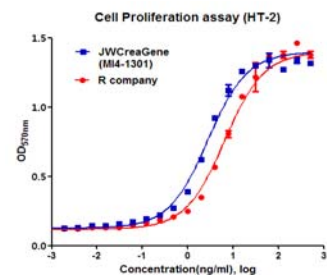
## DATA SHEET

### Product Information

<b>Product Name</b>	: <b>Recombinant Mouse Interleukin-4 (rmIL-4)</b>
<b>Synonyms</b>	: B-cell stimulatory factor 1 (BSF-1)
<b>Description</b>	: Recombinant mouse Interleukin-4 produced in <i>E. coli</i> is a non-glycosylated 13.5 kDa protein containing 121 amino acids. IL-4 induces the expression of class II major histocompatibility complex and Fc receptors on B-cells and monocytes. It also acts on T-lymphocytes, mast cell lines and several other haematopoietic lineage cells including granulocyte, megakaryocyte and erythroid precursors as well as macrophages.
<b>NCBI Accession No.</b>	: NM_021283.2
<b>Amino acid sequence</b>	: MHIHGCDKNHLREIIGILNEVTGEGTPCTEMDVPNVLTATKNTTESELVCRA SKVLRIFYLKHGKTPCLKKNSSVLMELQRLFRAFRCILDSSISCTMNESKSTS LKDFLESLSKIMQMDYS
<b>Molecular Mass</b>	: 13.65 kDa (121 aa)
<b>Protein tags</b>	: No tagging
<b>Source</b>	: <i>E. coli</i> .
<b>Cat. No.</b>	: MI4-10, MI4-25, MI4-50, MI4-100, MI4-250, MI4-500
<b>Storage</b>	: Should be at $\leq -70$ °C as undiluted aliquots of handy size. Avoid repeated freezing and thawing.
<b>Cross Reactivity</b>	: Rat

### Quality Control

Test items	Specifications
<b>Appearance</b>	: Clear, colorless liquid
<b>Purity</b>	: Greater than 97 % by RP-HPLC and SDS-PAGE
<b>Specificity</b>	: Using Western blot, detection
<b>Concentration</b>	: 0.1 mg/ml, Bradford method Determined by measuring the proliferation of murine HT-2 indicator cells.
<b>Biological Activity</b>	: The ED <sub>50</sub> is < 1.0 ng/ml, corresponding to a specific activity of > 1.0 × 10 <sup>6</sup> U/mg.
<b>Endotoxin</b>	: Less than 0.2 EU/μg as determined by the LAL method
<b>Formulation</b>	: PBS (pH 4.5-5.5) without preservative or carrier proteins.
<b>Stability</b>	: Stable for up to 12 months at -70 °C. Stable for a month at 4 °C.
<b>Sterility</b>	: Sterilized through a 0.2 μm membrane filter and packaged aseptically. Culture for 2 weeks, no growth



**Manufacturer** : **JW CreaGene Inc.**  
 FL2, Jungang induspia V, 138-6, Sangdaewon-dong, Jungwon-gu, Seongnam-si,  
 Gyeonggi-do, South Korea (462-120)  
 Tel: 82-31-737-3310, Fax: 82-31-737-3301